



## Box Properties

--Description--

Name:

Type: Closed Box

Shape: Prism, square

--Box Parameters--

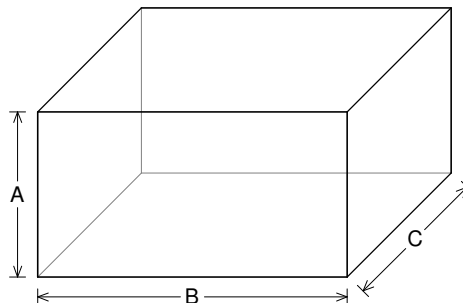
Vb = 4.035 cu.ft

V(total) = 4.185 cu.ft

Qtc = 0.953

F3 = 33.07 Hz

Fill = none



--External Dimensions--

A = 16 in

B = 30 in

C = 19 in

--Internal Dimensions--

A = 14.5 in

B = 28.5 in

C = 17.5 in

--Wall Thickness--

Front = 0.75 in

Side = 0.75 in

## Driver Properties

--Description--

Name: REX 12 S4

Type: Standard one-way driver

Company: RE Audio (2015)

--Configuration--

**No. of Drivers = 2**

Mounting = Standard

Wiring = Parallel

Drivers sum coherently = Yes

--Driver Parameters--

Fs = 23.92 Hz

Qms = 5.558

Vas = 3.437 cu.ft [6.875]

Xmax = 0.591 in

Sd = 85.5 sq.in [171]

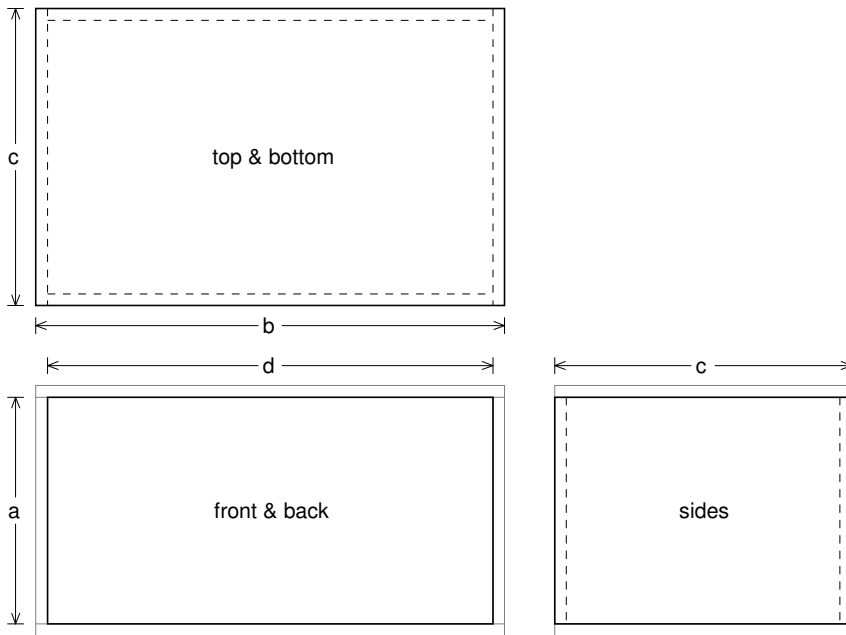
Qes = 0.697

Re = 3.607 ohms [1.804]

Le = 5.017 mH [2.509]

Z = 4.329 ohms [2.164]

Pe = 200 watts [400]



### Box Parts

Box Shape: Square Prism

- 1 Top, 1 Bottom: depth ( $c$ ) = 19 in  
width ( $b$ ) = 30, thickness = 0.75 in
- 1 Front, 1 Back: height ( $a$ ) = 14.5 in  
width ( $d$ ) = 28.5, thickness = 0.75 in
- 2 Sides: height ( $a$ ) = 14.5 in  
depth ( $c$ ) = 19, thickness = 0.75 in

--Driver Mounting--

Mounting: Front

Aim: All drivers face same direction



### Wiring Diagram

